

**TO BE A RESPECTED ENTERPRISE WITH
SUSTAINABLE DEVELOPMENT CAPACITY**

万事达® 成为受尊敬和具有可持续发展能力的企业



万事达使命 MISSION OF WISKIND

以工业创新和流通促进社会资源的集约利用
Promote intensive utilization of social resources by innovation and circulation of industrial products.

万事达核心价值观 CORE VALUES OF WISKIND

至诚致精，相融共生
Sincerity, Excellence, Supremacy and Win-win

**为顾客创造价值
让顾客的工程更优秀**
Create value for Customers

山东万事达建筑钢结构股份有限公司（以下简称：万事达）始创于上世纪70年代末，现已成为集金属维护系统研发生产、金属外墙保温系统研发制造、钢结构建筑系统设计施工为一体的国家高新技术企业三十余年。一直致力于建筑金属维护系统的研发、制造，为客户提供专业、完善、先进的建筑系统解决方案。拥有系列智能维护系统、铝镁锰屋面系统、万承组合楼板、冷压板系统及空气净化维护系统，在建筑美学、建筑功能及结构性能等方面满足建筑师和业主的要求。

万事达始终秉承“至诚致精，相融共生”的核心价值观，凭借卓越的品质和可靠的服务，得到了客户和社会的一致认可，先后被评为国家高新技术企业、省级企业技术中心、山东省先进民营企业、山东专利明星企业、山东省建筑产业化先进生产基地等荣誉称号，是ISO9001及ISO14001认证企业、中国钢结构工程专业承包一级企业、中国建筑金属结构协会副会长单位、中国钢结构行业三十强企业，连续三年入围中国钢结构企业三十强，并成为国内首批获得建筑金属（地）面设计与施工特级资质和中国金属维护系统承包特级资质的企业，2013年被评为金属维护系统行业十强企业，先后参与多项国家标准、图集及规范。

为顾客创造价值，让顾客的工程更优秀使我们不懈的追求，视产品质量为生命，锐意创新，追求与顾客、员工、社会的共赢。在机遇和挑战中不断发展，万事达正向着更高、更快、更强的目标迈进！

Shandong Wiskind Steel Building Stock Co., Ltd. (hereinafter referred to as Wiskind) was founded in the late 1970s. Now it has become a national high-tech enterprise integrating research and development and production of metal cladding systems and metal external wall insulation systems and design and construction of steel structure building systems. In the past over three decades, Wiskind has devoted itself to research and development and manufacturing of metal roofing and wall systems of buildings, and provided professional, perfect and advanced building system solutions. Now we have energy-saving cladding systems of the Shira Color Series, Al-Mg-Mn roofing systems, Wan Cheng Composite Decking Floor, cold room panel systems and clean room cladding systems which can meet the requirements of architects and owners in architectural aesthetics, building functions and structural performance.

Wiskind has always adhered to the core values of Sincerity, Excellence, Supremacy and Win-win and won recognition from customers and the society through its excellent quality and reliable reputation. Wiskind has rated as a national high-tech enterprise, a provincial enterprise technical center, an advanced private enterprise of Shandong, a star patent enterprise of Shandong, a modern production base of the building industry in Shandong, etc. Wiskind has obtained the certifications of ISO 9001 and ISO 14001 and is an enterprise with the grade-1 qualification of steel structure construction in China, the grade-1 qualification of steel structure manufacturing in China and the Grade-B qualification of lightweight steel work design. Wiskind has ranked among the top 30 steel structure enterprises in China for three consecutive years and is one of the first enterprises with the special qualification of design and construction of metal building roofing (wall) and contractors with the special qualification of metal cladding systems in China. In 2013, Wiskind was rated as one of the top 10 enterprises of metal cladding systems. Wiskind has successively participated in formulation of national standards, atlases and norms.

To create value for customers and make customers' projects more excellent is our unremitting pursuit. We regard product quality as our life, make innovations on the basis integrity and strive to create a win-win situation with customers, employees and the society. Wiskind has constantly developed amid opportunities and challenges and is marching forward towards higher goals.



国家高新技术企业

- 中国钢铁金属维护行业十强企业
- 中国钢结构行业三十强企业
- 山东省先进民营企业
- 山东省企业技术中心
- 山东省守合同重信用企业
- ISO9001/ISO14001认证企业
- 钢结构工程专业承包壹级资质企业
- 钢结构金属墙面设计与施工特级资质
- 中国金属维护系统承包特级资质
- 中国钢结构协会常务理事单位
- 中国钢结构协会常务理事单位
- 中国钢铁金属协会集成房屋分会副会长单位
- 中国钢铁金属协会集成房屋分会副会长单位

A National High-tech Enterprise

- One of the Top 10 Enterprise of Metal Building Roofing and Wall Systems in China
- One of the Top 30 Enterprises in the Steel Structure Industry in China
- An Advanced Private Enterprise of Shandong Province
- An Enterprise Technical Center of Shandong
- A Contract-honoring and Promise-keeping Enterprise of Shandong
- An Enterprise with ISO9001 and ISO14001 Certifications
- An Enterprise with the Grade-1 Qualification in Professional Contracting of Steel Structure Works
- An Enterprise with the Grade-B Qualification in Design of Steel Structure Works
- Special Qualification in Design and Qualification of Metal Building Roofing and Walls
- Special Qualification of Contractors in Metal Cladding Systems in China
- An Enterprise with the Grade-1 Qualification of Steel Structure Manufacturing in China
- An Executive Member Unit of China Steel Structure Association
- A Vice-chairman Unit of China Construction Metal Structure Association
- Vice chairman unit China construction Metal structure association house branch



MODULAR CONTAINER HOUSE INTRODUCTION

模块化集成箱房简介

模块化集成箱房由顶盖、墙板、立柱和若干块可互换墙体组成。采用模块化设计理念和生产技术，把一个箱房模块化成标准的零部件，对使用地再和当地建筑标准落位即可。以标准箱体为基本单元，像搭积木一样，可以进行纵向或纵向自由多样形式组合，空间布局灵活、功能定制，实现了使用功能多样化，应用领域多元化。

The modular container house consists of a roof, a foundation, columns and wall panels. It used the modular concept and technology. Every part is normal, we can assemble them easily. And the house can be combined like building blocks, to make the building different shapes.

产品设计说明 Product design instruction

产品类型 Product Type	标准化产品，具有标准化模块，以箱体为基本单元，可重复使用，及水平、纵向延伸使用，最高可堆叠三层 Standardized products, with standardized modules to the container as the basic unit, can be used vertically, and horizontally, vertical use of the Union, the maximum height can be three layers.						
单体规格 Monomer specifications	<table border="1"> <tr> <td>单体长: 6055mm (室内净尺寸5840mm)</td> <td>Length: 6055mm (indoor net size of 5840mm)</td> </tr> <tr> <td>单体宽: 2435mm (室内净尺寸2220mm) / 3000mm (室内净尺寸2800mm)</td> <td>Width: 2435mm (indoor net size 2220mm) / 3000mm (indoor net size 2800mm)</td> </tr> <tr> <td>单体高: 2896mm (室内净尺寸2510mm)</td> <td>Height: 2896mm (indoor net size 2510mm)</td> </tr> </table>	单体长: 6055mm (室内净尺寸5840mm)	Length: 6055mm (indoor net size of 5840mm)	单体宽: 2435mm (室内净尺寸2220mm) / 3000mm (室内净尺寸2800mm)	Width: 2435mm (indoor net size 2220mm) / 3000mm (indoor net size 2800mm)	单体高: 2896mm (室内净尺寸2510mm)	Height: 2896mm (indoor net size 2510mm)
单体长: 6055mm (室内净尺寸5840mm)	Length: 6055mm (indoor net size of 5840mm)						
单体宽: 2435mm (室内净尺寸2220mm) / 3000mm (室内净尺寸2800mm)	Width: 2435mm (indoor net size 2220mm) / 3000mm (indoor net size 2800mm)						
单体高: 2896mm (室内净尺寸2510mm)	Height: 2896mm (indoor net size 2510mm)						

产品配置 Product configuration

框梁 Frame	热镀锌型材, 工厂预制	Hot galvanized profiles, factory prefabricated
墙体保温 Room insulation	屋面保温: 100mm 玻璃丝棉 地面保温: 100mm 玻璃丝棉	Roof insulation: 100mm glass wool Ground insulation: 100mm glass wool
吊顶 Ceiling	彩钢吊顶	PPGI ceiling
地板 Floor	2mm厚橡胶地板	2mm thick rubber flooring
墙体 Wall	75mm玻璃丝棉	75mm glass wool
门 Door	钢系门	Doors: steel door
窗 windows	塑钢推拉窗	Windows: Plastic sliding window
电气 Electrical	屏壳控制电路	Box/Prefabricated Circuit
供水 Watersupply	壁挂插座	Wall laying
排水 Drainage	墙侧排水	Wall side drainage



- | | | |
|--------------------------|---------------------------------|---------------------------------|
| 1 PVC密封胶 PVC Seal | 8 保温层 Insulation | 11 屋面顶板 Roof Top External Plate |
| 2 箱顶主梁 Roof Main Beam | 9 防水膜 Water Proof Film-membrane | 12 顶角件 Top Corner Part |
| 3 角柱 Corner Post | 10 水泥纤维板 Fiber Cement Board | |
| 4 墙板 Wall Panel | 11 地板 Floor Board | |
| 5 底角件 Bottom Corner Part | 12 密封胶 Skirting | |
| 6 箱底主梁 Bottom Main Beam | 13 屋顶双层保温层 Roof insulation | |
| 7 箱底次梁 Bottom Sub-beam | 14 箱顶次梁 Top Sub-beam | |

PRODUCT ADVANTAGE

产品优势



ENERGY SAVING, INSULATING 保温节能

选取最佳保温材料，强化保温设计，为客户带来极致保温效果。

Select the best insulation raw materials, strengthen the insulation design, to bring customers the ultimate insulation effect.

GALVANIZED FRAME 镀锌框架

结构计算采用同济大学研发的3D3S钢结构软件及建研院的PKPM软件，确保结构的安全性。原材料镀锌钢板经冲压成型机通过计算机程序编程分别在制板折弯、压型、角柱等，经部件打磨、焊接、组焊成顶盖、底座、主体框架抗风、抗震性能优越，使用寿命20年以上。

The structure part is designed by the 3D3S steel structure software and PKPM software, which guarantee the safety. Life span is over 20 years.



QUICK AND EFFICIENT 安装效率高

集成箱房工厂化预制程度高，现场工作内少，施工安装效率高。

Modular container house is highly prefabricated, it is easy for installation at site, Quick and efficient.



MATERIAL ADVANTAGES 材料优势

聚氨酯(PU)

保温节能，导热系数低，隔音降噪，优异的燃烧等级，环保，抗负风压力强
good insulation, low thermal conductivity, noise reduction, excellent combustion level, environmental protection, anti-negative wind pressure.

憎水岩棉(WATERPROOF ROCK WOOL)

A级不燃，导热系数低，隔音性好，蓄水率大
Class A non-combustible, low thermal conductivity, good sound insulation, good waterproof

玻璃棉(GLASS WOOL)

成型好，密度低，导热率低，保温隔热，吸音性能好，防腐蚀
Good forming, low density, low thermal conductivity, insulation, sound-absorbing performance, anti-corrosion

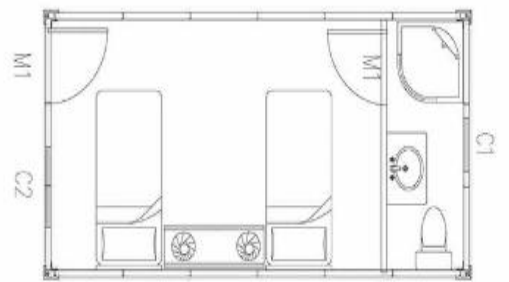
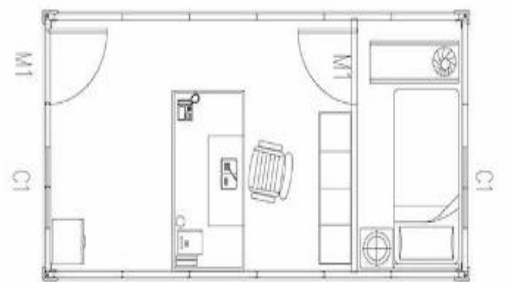
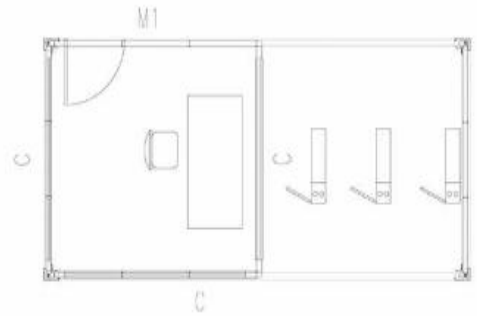
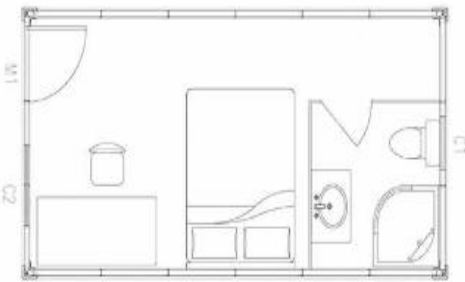
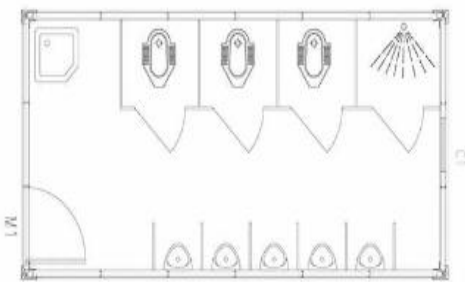




采用优质原材料，减少甲醛释放，减少细菌滋生，夏日暴晒，室内无异味。
Using high-quality raw materials to reduce formaldehyde release, reduce bacterial growth, indoor has no odor in summer exposure.



集成箱房图纸
MODULAR HOUSE DRAWING



CONVENIENCE KIOSKS
便利亭



ACCESS CONTROL HOUSE
门禁



TOILET
卫生间



ENGINEERING CASE

工程案例

CAMP
营地



HEAD QUARTERS CAMP
指挥部



VILLA
别墅房

Multi-function show room
多功能办公展厅



FIRE STATION
消防站



SALES OFFICES
售楼处



LANDSCAPE HOTEL
住宿酒店



OFFICE CAMP
办公楼



APPLICATION AREAS

应用领域



SALES OFFICES
售楼处



ENGINEERING CAMP
工程营地



FACTORY PREMISES
厂区用房

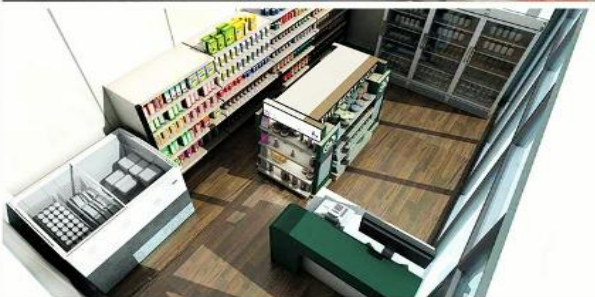
SCENIC HOUSE
景区用房



EXHIBITION HALL
展会房



CONVENIENCE KIOSKS
便利亭



ACCESS CONTROL HOUSE
门禁



TOILET
卫生间

